

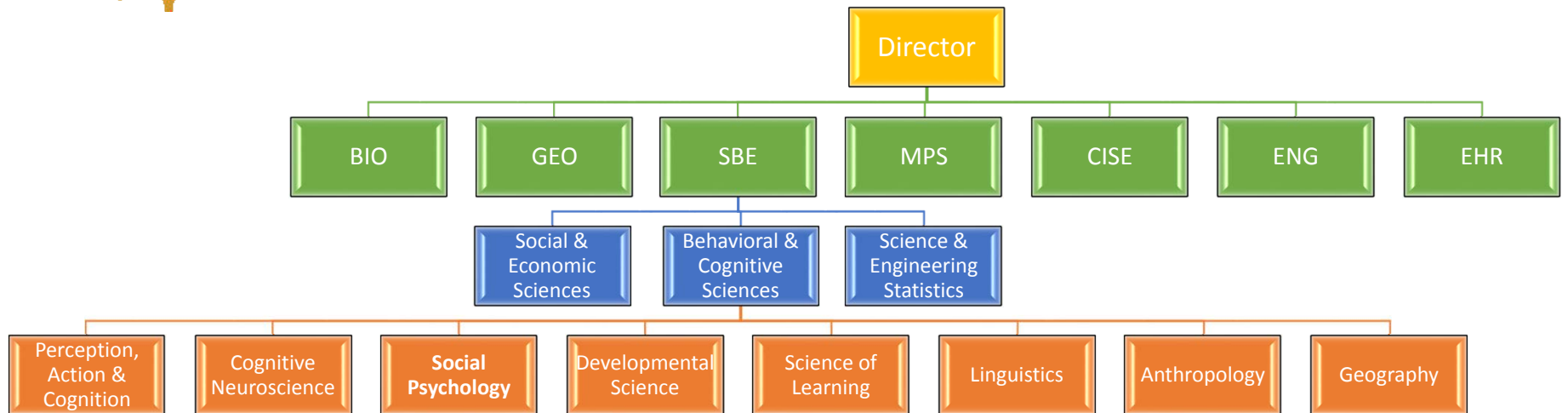
Behavioral and Social Sciences at the National Science Foundation

Steven J. Breckler

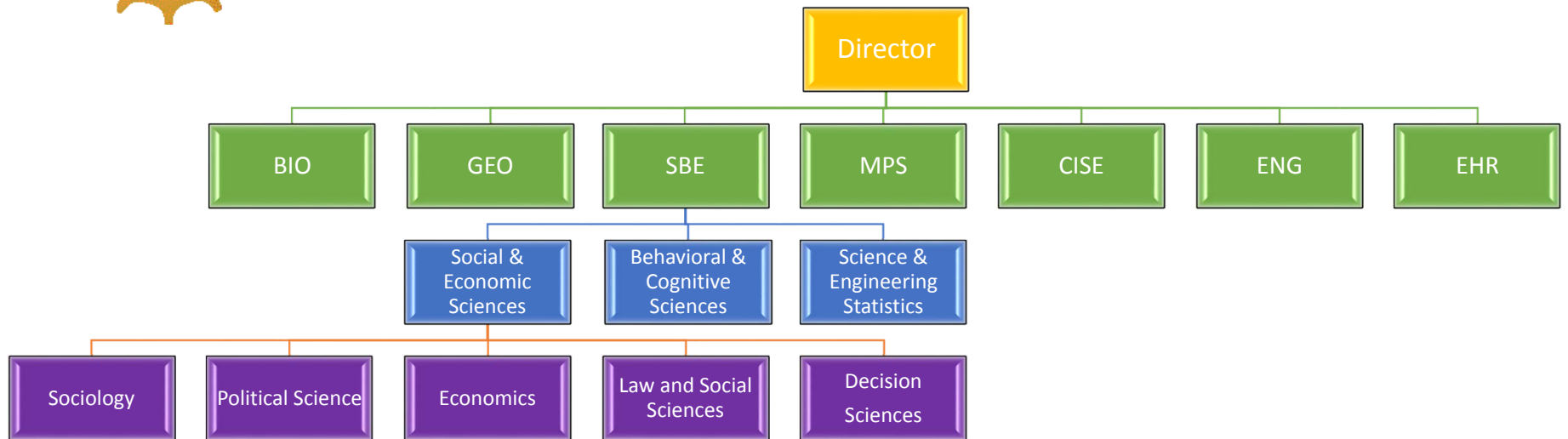
Program Director

NSF

About NSF



About NSF



Disease-Related Goals

Research with disease-related goals, including work on the etiology, diagnosis or treatment of physical or mental disease, abnormality, or malfunction in human beings or animals, is normally not supported. Animal models of such conditions or the development or testing of drugs or other procedures for their treatment also are not eligible for support. However, research in bioengineering, with diagnosis- or treatment-related goals, that applies engineering principles to problems in biology and medicine while advancing engineering knowledge is eligible for support.

NSF Review Criteria

Intellectual Merit

- *The potential to advance knowledge*

Broader Impacts

- *The potential to benefit society*

Interagency Programs

Smart and Connected Health (SCH)

PROGRAM SOLICITATION
NSF 16-601

REPLACES DOCUMENT(S):
NSF 13-543



National Science Foundation

Directorate for Computer & Information Science & Engineering
Division of Computing and Communication Foundations
Division of Computer and Network Systems
Division of Information & Intelligent Systems

Directorate for Engineering

Directorate for Social, Behavioral & Economic Sciences



National Institutes of Health

Eunice Kennedy Shriver National Institute of Child Health and Human Development

National Cancer Institute

National Human Genome Research Institute

National Institute of Biomedical Imaging and Bioengineering

National Institute on Aging

Office of Behavioral and Social Sciences Research

Full Proposal Deadline(s) (due by 5 p.m. submitter's local time):

December 08, 2016

Integrative (INT) Proposals